

## Examinations

Candidates with prior experience have the option to register for the International Examinations. Below are the examination fees

CompTIA International Exam fees	
COURSE NAME	EXAM FEE
CompTIA ITF+	N\$ 1 211.40
CompTIA A+	N\$ 4 420.44
CompTIA N+	N\$ 3 230.33

### Note:

Please note that these fees are subject to change.

### Registration:

You can register any time of the year. However due to limited space, kindly enquire at your nearest NAMCOL centre.

### Business Hours:

Classes are offered in the morning (08H00- 13H00), afternoon (14H00- 17H00) and during the evening after 17H00.



For further information, please contact:

#### Windhoek

Tjeripo Tjihoreko  
tjihoreko@namcol.edu.na  
(061) 320 5279  
Tel: 061 320 5279/ 081 845 7736  
Cbicwindhoek@namcol.edu.na

#### Eenhana

Tel: 065 263 848/ 081 371 3312  
CbicEenhana@namcol.edu.na

#### Ondangwa

Tel: 065 240 539/ 081 419 8880  
CbicOndangwa@namcol.edu.na

#### Ongwediva

Tel: 065 233 794/ 081 234 7348  
CbicOngwediva@namcol.edu.na  
Otjiwarongo  
Tel: 067 304 379 / 081 202 6486  
CbicOtjiwarongo@namcol.edu.na

#### Outapi

Tel: 065 251 070/ 081 238 4196  
CbicOutapi@namcol.edu.na

#### Walvisbay

Tel: 064 205 990 / 081 352 8567  
CbicWalvisbay@namcol.edu.na

#### Opuwo

Tel: 065 277 012/081 297 4300  
CbicOpuwo@namcol.edu.na

#### Rundu

Tel: 066-255 545 / 081 215 6210  
cbicrundu@namcol.edu.na

**CompTIA**  
Authorized Partner

in partnership with

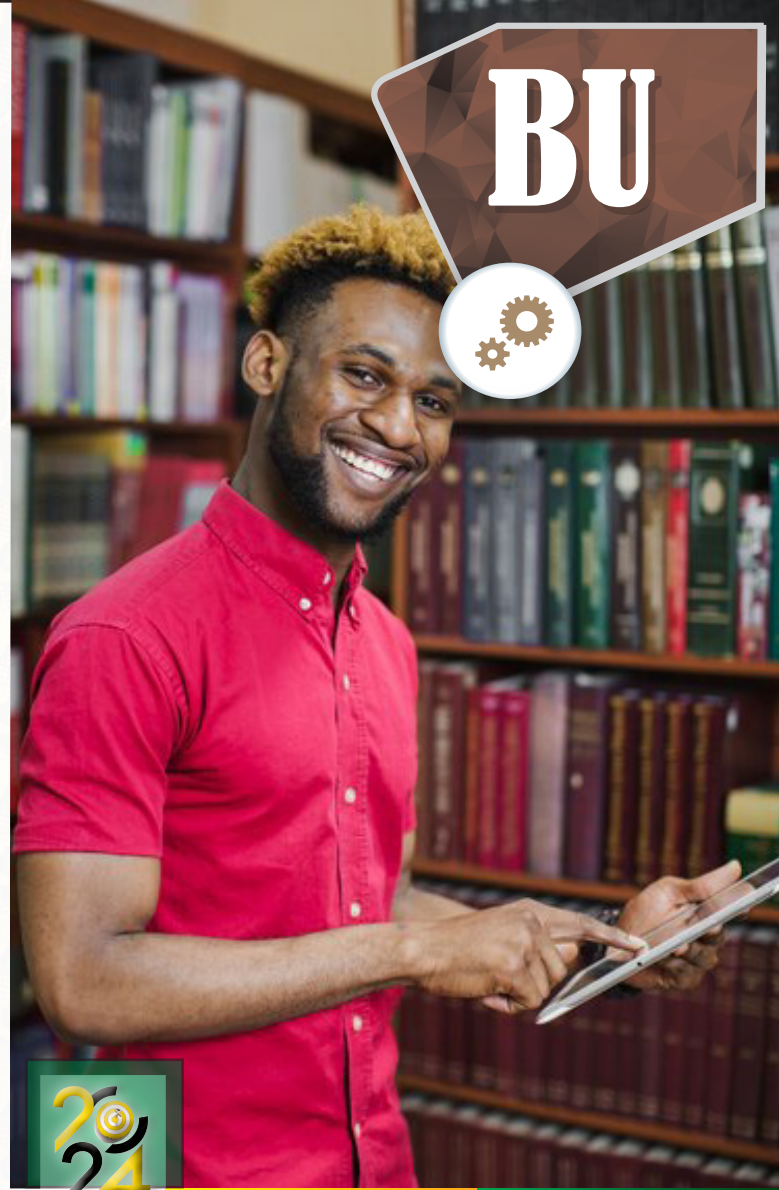


**NAMCOL**

Visit our website  
[www.namcol.edu.na](http://www.namcol.edu.na)



TAKING EDUCATION TO THE PEOPLE



**INFORMATION**  
Technical Support  
Certification



in partnership with



**NAMCOL**

TAKING EDUCATION TO THE PEOPLE

## Introduction

NAMCOL is a fully certified and accredited Computing Technology Industry Association (CompTIA) partner. CompTIA boasts with a successful track record of over 30 years in the IT industry. The demand for a knowledgeable society pertaining to the Information and Communication Technologies shifts as the world is becoming a global village, and research has shown that certified employees have superior communication skills and are better able to understand new and complex technologies.

This programme aims to provide valuable tools and resources to assist training and certifying IT professionals. Successful IT careers start with quality training and certification. The program is designed to promote international certifications and enhance IT career pathways for students.

## Entry Requirements

An ICDDL (International Computer Driving License) certification or equivalent qualification.

## Information Technology Technical Support Certification include the following:

- CompTIA IT Fundamentals (ITF+)
- CompTIA A+
- CompTIA N+
- (This package includes training material, training (face-to-face/online) and the international examinations)

## Duration:

One year

## CompTIA IT Fundamentals (ITF+)

- CompTIA IT Fundamentals (ITF+) validates essential IT skills and knowledge needed to perform tasks commonly performed by advanced end-users and entry-level IT professionals alike, including:
- Identifying and explaining computer components
- Setting up a workstation, including conducting software installations
- Establishing network connectivity
- Identifying compatibility issues and identifying and preventing security risks
- Managing the safety and preventative maintenance of computers

### Popular Job Roles for the CompTIA IT Fundamentals (ITF+)

Sales Associate	Sales Engineer
Account Manager	Marketing Specialist
Product Specialist	Customer Support

## CompTIA A+

CompTIA A+ is the preferred qualifying credential for technical support and IT operational roles. A+ certified professionals identify issues and problem-solving more effectively than those without certification. In order to receive the CompTIA A+ certification, candidates must pass two examinations, namely 220-1001 and 220-1002 Core Series. Successful candidates will have the knowledge required to:

Assemble components based on customer requirements  
Install, configure and maintain devices, PCs and software for end users  
Understand the basics of networking and security, including forensics  
Apply troubleshooting skills to diagnose, resolve and document common hardware and software issues  
Provide appropriate customer support  
Understand the basics of virtualization, desktop imaging and deployment

### POPULAR JOB ROLES FOR THE COMPTIA A+

Service Desk Analyst	System Support Specialist
Desktop Support Administrator	Help Desk Technician
End User Computing Technician	Technical Support Specialist
Help Desk Technician	Field Service Technician
Associate Network Engineer	Data Support Technician

## CompTIA's Network+

CompTIA's Network+ validates the knowledge and skills to troubleshoot, configure and manage common wired and wireless network. Network+ certifies a basic understanding of emerging technologies including unified communications, mobile, cloud and virtualization technologies.

## Network+ ensures that an IT professional has the knowledge and skills to:

- Design and implement functional networks
- Configure, manage, and maintain essential network devices
- Use devices such as switches and routers to segment network traffic and create resilient networks.
- Identify benefits and drawbacks of existing network configurations.
- Implement network security, standards, and protocols.
- Troubleshoot network problems.
- Support the creation of virtualized networks.

### POPULAR JOB ROLES FOR THE COMPTIA N+

Network Field Technician/Engineer	Network Support Specialist
Network Administrator	Network Analyst
Help Desk Technician	

## Fee Structure

A once-off registration fee of **NS 1 500.00** is payable.

COURSE NAME	COURSE FEE
Information Technology Technical Support Certification	
CompTIA IT Fundamentals (ITF+)	<b>NS 1 400.00</b>
CompTIA A+	<b>NS 5 140.00</b>
CompTIA N+	<b>NS 3 780.00</b>

This include tuition, training materials and the international examinations.